

SPECIFICATION



MODEL			SB-40	SB-60	SB-80	SB-100	SB-155	SB-225	SB-300	SB-485
Units of Measurement	Metric	US								
Maximum Capacity	kg.	lbs.	18.1 (40)	27.2 (60)	36.3 (80)	45.4 (100)	70.3 (155)	102.1 (225)	136.1 (300)	220.0 (485)
Overall Dimensions :										
A - Machine Width	mm.	inch	1345 (53")	1615 (63.6")	1629 (64.1")	1809 (71.2")	1707 (67.2")	2066 (81.3")	2375 (93.5")	2617 (103")
B - Machine Depth	mm.	inch	1121 (44.1")	1121 (44.1")	1279 (50.4")	1279 (50.4")	1596 (62.8")	1596 (62.8")	1764 (69.4")	2154 (84.8")
C - Machine Height	mm.	inch	1467 (57.8")	1467 (57.8")	1681 (66.2")	1681 (66.2")	2124 (83.6")	2124 (83.6")	2221 (87.4")	2621 (103.2")
Cylinder Information :										
Basket Diameter	mm.	inch	650 (25.6")	650 (25.6")	790 (31.1")	790 (31.1")	1069 (42.1")	1069 (42.1")	1200 (47.2")	1400 (55.1")
Basket Depth	mm.	inch	550 (21.7")	820 (32.3")	750 (29.5")	930 (36.6")	790 (31.1")	1150 (45.3")	1205 (47.4")	1430 (56.3")
Basket Volume	cu.ft.		0.18 (6)	0.27 (10)	0.37 (13)	0.46 (16)	0.71 (25)	1.03 (36)	1.36 (48)	2.2 (78)
Drum Compartment	Number		1	1	1	1	3	3	3	3+3
Door Opening and Height :										
Door Open Size Width	mm.	inch	280 (11.02")	280 (11.02")	300 (11.81")	300 (11.81")	400 (15.75")	400 (15.75")	450 (17.72")	450 (17.72")
Door Open Size Length	mm.	inch	400 (15.75")	515 (20.28")	515 (20.28")	600 (23.62")	600 (23.62")	705 (27.76")	760 (29.92")	1160 (45.67")
Drive Information :										
Number of Motors	Number		1	1	1	1	2	2	2	2
Size of Motor	kW	HP	2.2 (3)	3.7 (5)	5.5 (7.5)	7.5 (10)	5.5 (7.5)	7.5 (10)	11 (15)	18.5 (25)
Cylinder Speeds (Programmable):										
Wash	RPM	G-Force	47 (0.8)	47 (0.8)	43 (0.8)	43 (0.8)	39 (0.8)	37 (0.8)	35 (0.8)	32 (0.8)
Distribution	RPM	G-Force	91 (1.7)	91 (1.7)	67 (1.7)	67 (1.7)	69 (1.7)	65 (1.7)	50 (1.7)	47 (1.7)
Extract 1	RPM	G-Force	380 (52.4)	380 (52.4)	426 (80.1)	426 (80.1)	286 (48.8)	285 (48.5)	300 (60.3)	300 (70.4)
Extract 2	RPM	G-Force	957 (335)	957 (335)	825 (350)	825 (350)	710 (350)	710 (350)	720 (350)	600 (330)
Water Inlets and Consumption :										
Hot Water Size	NPT		3/4"	3/4"	3/4"	3/4"	1"	1-1/4"	1-1/2"	1-1/2"
Cold Water Size	NPT		3/4"	3/4"	3/4"	3/4"	1"	1-1/4"	1-1/2"	1-1/2"
Additional Water Inlet	NPT		3/4"	3/4"	3/4"	3/4"	1"	1-1/4"	1-1/2"	1-1/2"
Average HOT Water Consumption/Cycle	liters	gal	36 (10)	51 (14)	82 (22)	96 (25)	131 (35)	186 (49)	229 (60)	430 (114)
Average COLD Water Consumption/Cycle	liters	gal	92 (24)	129 (34)	172 (45)	204 (54)	289 (76)	405 (107)	553 (146)	953 (252)
Drain Outlets and Capacity :										
Number of Drains	Standard	Optional	1 (2)	1 (2)	1 (2)	1 (2)	2	2	2	2
Drain Size	mm.	inch	76.2 (3")	76.2 (3")	76.2 (3")	76.2 (3")	102 (4")	102 (4")	102 (4")	102 (4")
Drain Capacity	liters/min	gal/min	724 (191)	724 (191)	793 (209)	793 (209)	1639 (433)	1639 (433)	1733 (457)	1866 (493)
Steam Inlet and Consumption :										
Steam Inlet Connection	NPT		1/2"	1/2"	1/2"	3/4"	3/4"	N/A	N/A	N/A
Steam Pressure	bar	psi	8.6 (125)	8.6 (125)	8.6 (125)	8.6 (125)	8.6 (125)	8.6 (125)	8.6 (125)	8.6 (125)
Steam Consumption	kg/hr	lb/hr	60 (133)	88 (193)	116 (256)	142 (314)	216 (477)	309 (681)	403 (889)	640 (1411)
Compressed Air System :										
Air Inlet Connection	NPT		N/A	N/A	N/A	N/A	3/8"	3/8"	3/8"	3/8"
Air Pressure	bar	psi	N/A	N/A	N/A	N/A	8.6 (125)	8.6 (125)	8.6 (125)	8.6 (125)
Power of Electrical Heating :										
Electrical Power	kW		12	18	24	36	N/A	N/A	N/A	N/A
Weight and Shipping Information :										
Net Weight (approx.)	kg.	lbs.	998 (2200)	1077 (2374)	1540 (3395)	1685 (3715)	2476 (5459)	2794 (6160)	4525 (9976)	5097 (11237)
Domestic Shipping Weight (approx.)	kg.	lbs.	1028 (2266)	1105 (2436)	1568 (3457)	1715 (3781)	2541 (5602)	2877 (6343)	4605 (10152)	5193 (11449)

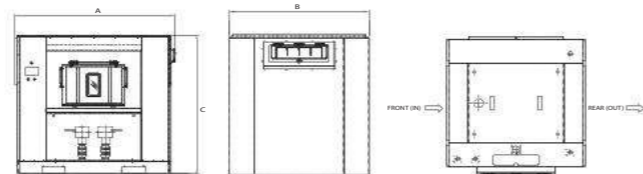
** The technical data listed above are based on standard features only. To get information for optional features please contact factory and distributor.
Specification of design is subject to change without notice. For additional options please consult factory and distributor.

Standard Features :

- All wetted parts are 304 (18/8)stainless steel
- 5 Compartment supply dispenser
- Advanced microprocessor
- 300G extract force
- Built in vacuum breaker
- Variable frequency drive
- Stainless steel cabinet

Optional Features :

- Direct steam heating
- Electrical heating
- EMI filter for CE
- Water Recovery System
- Automatic drum positioning
- Pneumatic door lock



Washer Extractor

SB Series

MODEL : SB-40, SB-60, SB-80, SB-100,
SB-155, SB-225, SB-300, SB-485



SB Series - SOFTMOUNT

The Image SB Series - Softmount Barrier Washers for small, medium and Large On-Premise Laundry Applications where Hygiene is a major concern, such as Health Care or Clean Room Applications.

The SB series - Outstanding Reliability and Efficiency at an Affordable Price

The SB series is a solution for clean room applications. It is purposely designed and built to ensure that the garments cleaned are processed at the highest level of quality possible. The robust machine is designed to last for many years and the performance has proven to be reliable. The SB model has also been designed and manufactured with quality in mind, using fewer parts while still achieving greater flexibility and strength. The use fewer parts results in lower maintenance over the life of the machine. The freestanding design allows for installation of the machines in unconventional places.

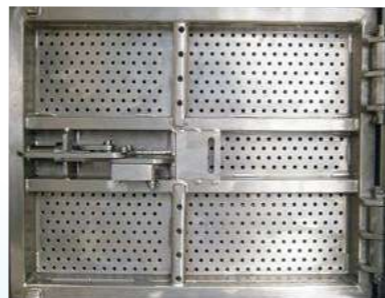
Advanced Touch Screen Control

The IMAGE Touch Screen Controller (IWT) is an advanced and user-friendly system capable of storing up to 50 customizable wash programs. Featuring an intuitive GUI interface, multi-language support, and USB & SD card connectivity, it enables easy program management via IWS software. The controller precisely manages water levels, temperature, wash speeds, drainage, and chemical dosing to deliver optimum wash performance with maximum efficiency and lower operating costs.



Door Opening System

Loading and unloading are fast and easy. The door is constructed of stainless steel for extra strength and durability. The door opening system has been engineered to make the operation safe, simple and reliable. For hygienic purposes, the machine has separate loading and unloading doors. The stainless steel basket for durability and ease of maintenance.



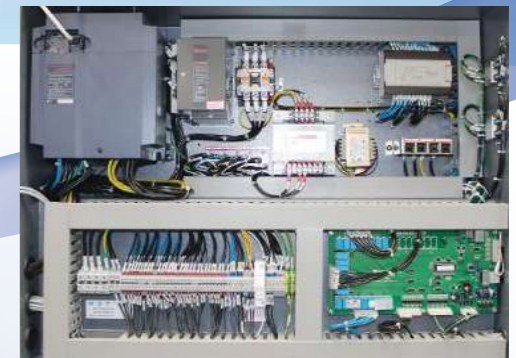
Supply Dispenser and External Liquid Supply Connection

A 5 compartment dispenser for both liquid and powder detergents is standard. The dispenser is mounted on the side of the machine at a convenient height for easy reach. The dispenser is flushed automatically during the wash cycle. All machines are provided with five supply signals and liquid connections as standard equipment.



Robust Energy Efficient Drive

The motor is controlled electronically by a variable frequency drive. The inverter reduces the peak energy demand, saves energy and lowers the inrush current. It is also a watchdog for the motor, protecting against overload and over voltage. The inverter makes it possible to achieve higher extract speeds, which significantly saves energy and time in the drying process.



Freestanding Construction and Suspension System

The suspension system has been designed and engineered for stability and performance. The spring suspension is standard on the 40 and 100 pounds models while the air cushion suspension is standard on the larger capacities. The suspension system means no need for expensive foundation or floor modifications.



Solid Bearing Housing Structures

The machine assembly uses by heavy duty bearings. The bearings are located outside of the wash solution and reduce possibility of damaged should the seals leak.

