



# X-Transport

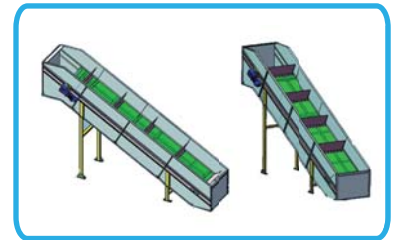
Loading Conveyor

MODEL: XTLC-60

# SPECIFICATION

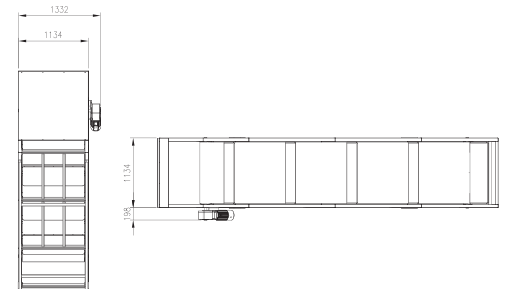
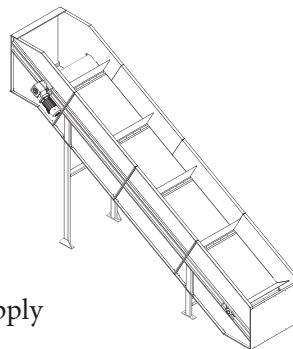
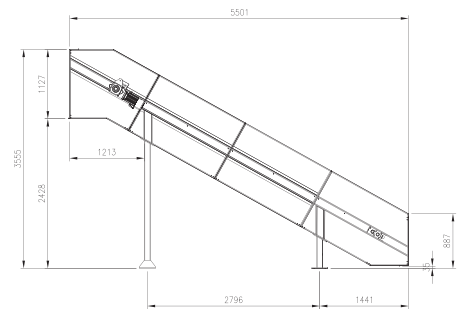
## LOADING CONVEYOR

MODEL	Matric	US	XTLC-60
<b>Capacity :</b>			
Compartment Capacity (Dry weight)	kg.	lbs.	60 (132.2)
Number of loading compartments	Compartment		4-8 depending on conveyor length and loading capacity
<b>Speed :</b>			
Speed	meter/ min.		30
<b>Motor :</b>			
Water Pump Motor	kW.		1.5
<b>Controller</b>			
Automatic	Integrated with central control system		
Manual	Push button switch		
<b>Power System</b>			
Voltage	V/ Ph/ Hz		208-240/ 380-480V/ 50/60Hz/ 3 Ph. + Neutral



### STANDARD FEATURES:

- Motor controlled Three-Phase or Single-Phase
- Loading compartment depending on length and capacity
- Heavy duty construction
- All in contact with linen made of 304 (18/8) stainless Steel
- Belts made of PVC either Black, White or Green color
- Adapted for automatic control
- Manual operation
- Reversing drive



### OPTIONAL FEATURES:

- Variable speed with inverter drive
- Automatic weighting system with digital supply



ACCURATE TECHNOLOGIES CO., LTD.

Bangkok, Thailand Phone : +66(0)2740-5511 (Auto) Fax : +66(0)2752-2773  
 Website : www.imagelaundrysystems.com Email : sales@accuratethai.com

Rev. 2019-000