

# X-SERIES

CONTINUOUS BATCH WASHER

**C - TYPE** : Counter Flow System  
**B - TYPE** : Batch Flow System

ACCURATE TECHNOLOGIES CO., LTD.  
Bangkok, Thailand Phone : +66(0)2740-5511 (Auto) Fax : +66(0)2752-2773  
Website : [www.imagelaundrysystems.com](http://www.imagelaundrysystems.com) Email : [sales@accuratethai.com](mailto:sales@accuratethai.com)



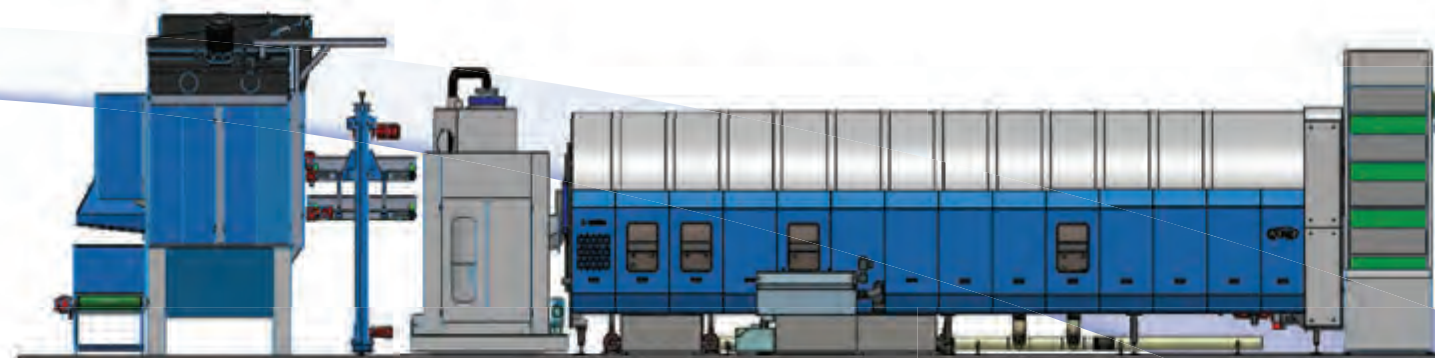




# X-Power 40/60/90

Based on our long quality tradition, the Continuous Batch Washer of the X-Power series is extremely rigid and reliable. The machine design includes all the advantages of a bottom transfer concept and a double drum execution. Different machines sizes of 40kg up to 100kg are available. Stainless steel inner and outer drum and piping system are standard. The total low maintenance concept makes our machines affordable for operation. The highest hygienic standards are fulfilled. Special executions and optional features are available upon request.

Our Continuous Batch Washer is equipped with a high standard in efficient washing technology. After a cycle, the linen is transferred to the next compartment without being lifted. Due to this bottom transfer technology, the linen is transported safely and gently. Operators can be sure that linen stuck problem will not happen.



A ready to use Continuous Batch Washer even in standard execution underlines the complete concept idea. Universal and flexible with various added options and custom made solutions are further possible. Always focused on customers' needs and requirement, we can offer various machines configuration. In combination with our other equipment, a complete washing line can be established.

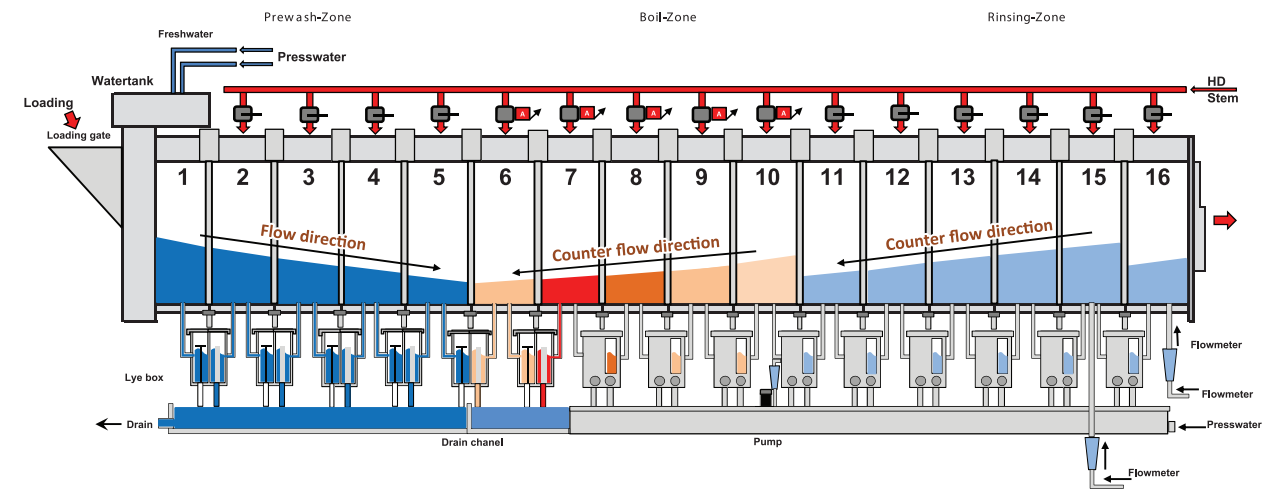
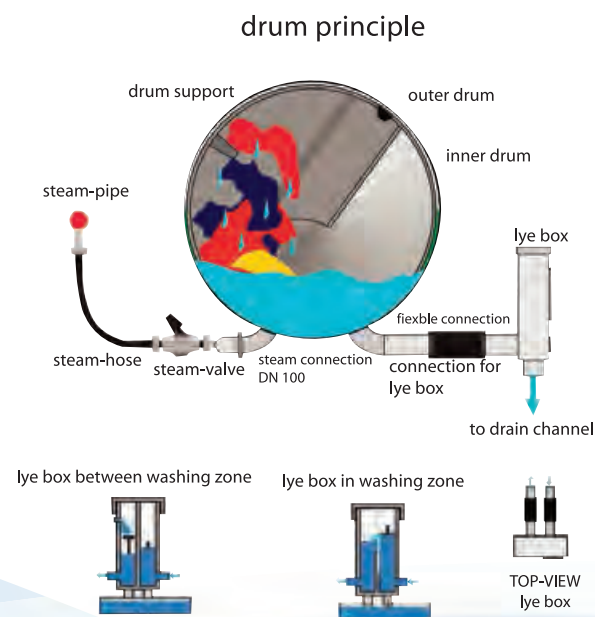
IMAGE is produced by Accurate Technologies in Thailand. High quality standard and qualified engineering guarantee for years of performance and low maintenance on our machines.



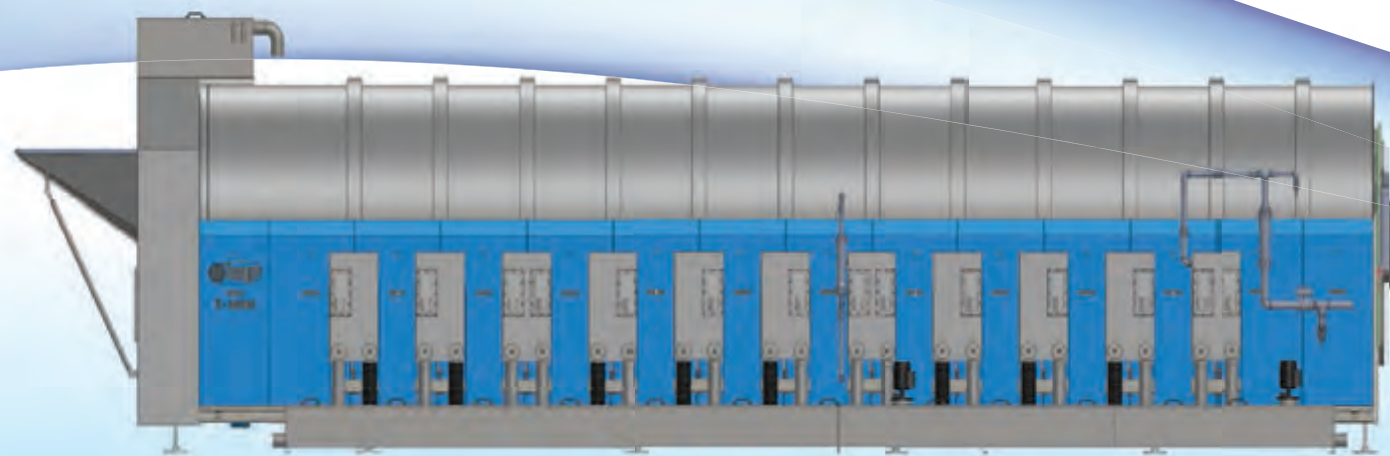
### PRODUCT INTRODUCTION:

#### (Counter Flow System)

- The washing procedure is based on the water flow into the tunnel. A combination of water flow in and against linen transport direction creates a high efficient filtering and streaming. Adjustable water height and overflow pipes are also included.
- Inner and outer drum are concept with extreme small clearance and fulfill the highest hygienic standards. Three connections for chemical to each compartment and 10 free programmable dosing contacts allow various washing procedures.
- Intelligent control systems are programmed to the future aspects of washing technology.
- Newest water recycling and filtering technologies work together in our machines.



- Extremely low water consumption due to large water recycling tanks which is standard.
- Easy to understand control and programming software make it simple to adjust the machine for every washing process and all program parameter. The user terminal has a touch screen monitor for visualizing all necessary information in graphic mode from the high quality PLC system. Pending angle, turning speed, unloading speed and all data specifying a wash program can be programmed. Data reports and storage is also an optional feature.



#### STANDARD FEATURES:

- Designed up to 21 compartments
- Drum and piping made of stainless steel
- Integrated water recovery tank
- Linen transfer on bottom
- Big size loading funnel
- Floating tank on top of the machine
- Low-Maintenance support of the drum
- PLC control with dialogue menu
- 50 Free adjustable washing programs
- Graphic LCD color display (Touch screen)
- Integrated fault trouble shooter

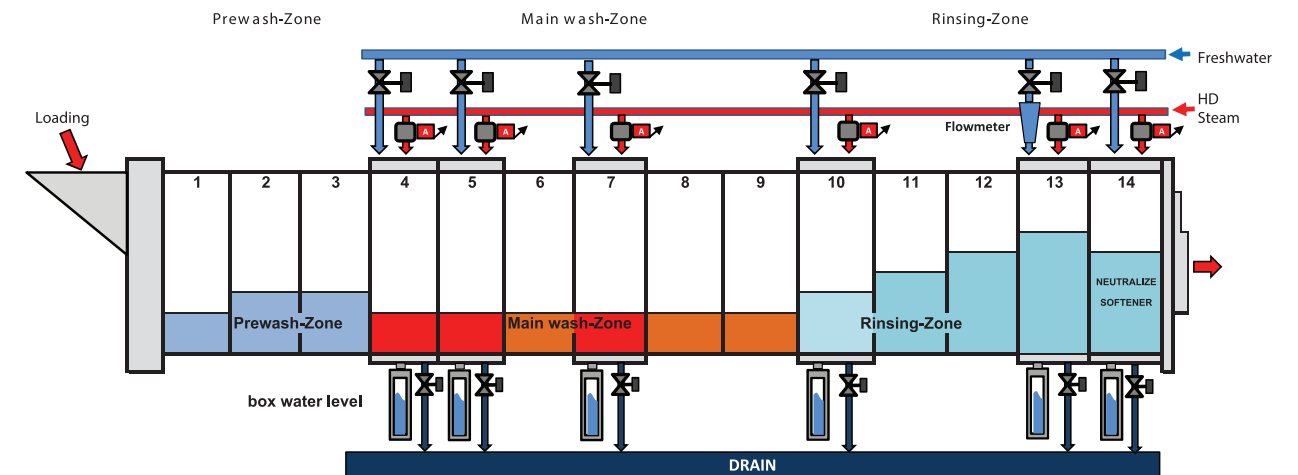
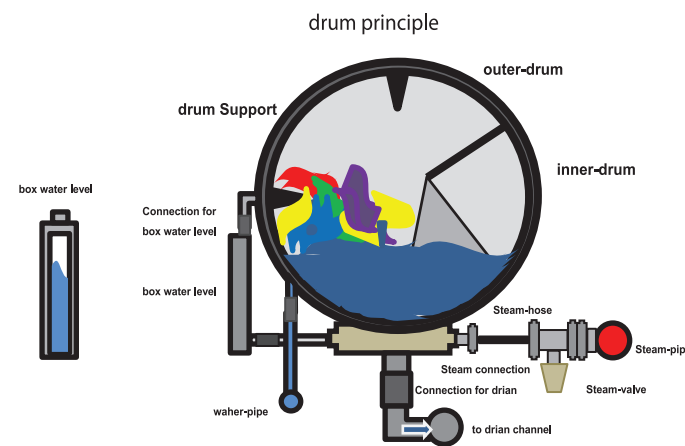
#### OPTIONS:

- Thermal insulation of drum
- Rapid drain device in lye box
- Data record and storage system
- Additional monitor
- Printer
- Media measurement devices
- pH probe and connection
- Additional dosage contacts
- Others features upon request

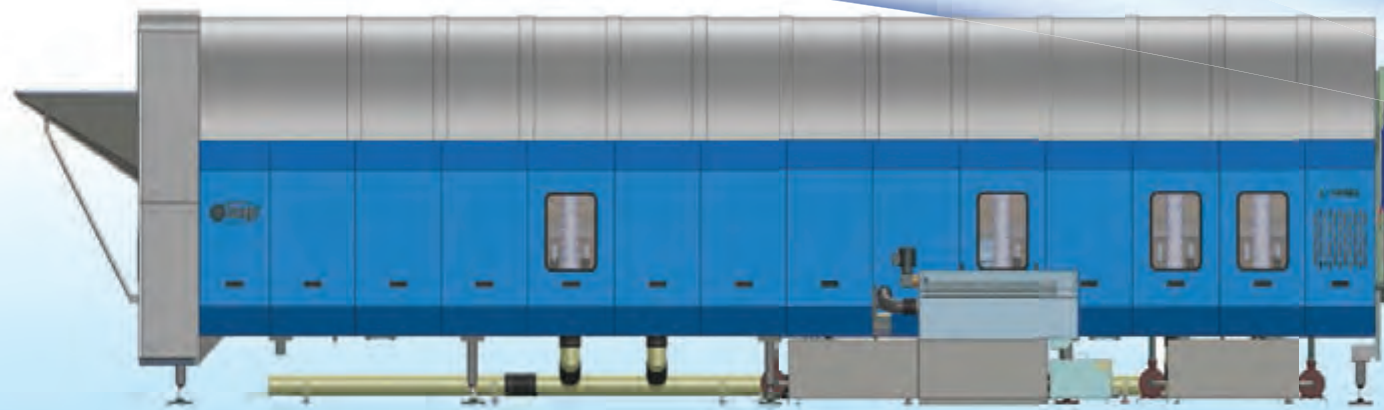
## PRODUCT INTRODUCTION:

(Batch Flow System)

- Inner and outer drum are designed with extreme small clearance and fulfill the highest hygienic standards. Three connections for chemical to each compartment and 10 free programmable dosing contacts allow various washing procedures.
- The washing procedure is based on the water flow into the tunnel. A combination of water flow in and against linen transport direction creates a high efficient filtering and streaming. Adjustable water height, overflow pipes and water level sensor are also included.
- Intelligent control systems are programmed to the future aspects of washing technology.
- Newest water recycling and automatic filtering technologies work together in our machines.
- Extremely low water consumption due to large water recycle tanks being equipped.
- Improved efficiency to minimize the consumption of detergents and chemical.



- Capable of washing multiple loads of laundries with different colors and fabrics in a single, continuous, pre-programmed process.
- Easy to understand control and programming software make it simple to adjust the machine for every washing process and all program parameter. The user terminal has a touch screen monitor for visualizing all necessary information in graphic mode from the high quality PLC system. All data specifying a wash program can be programmed. Data reports and storage is also an optional feature.



### STANDARD FEATURES:

- Designed up to 21 compartments
- Drum and piping made of stainless steel
- Integrated water recovery tank
- Linen transfer on bottom
- Big size loading funnel
- Floating tank on bottom of the machine
- Low-Maintenance support of the drum
- PLC control with dialogue menu
- 100 Free adjustable washing programs
- Graphic LCD color display (Touch screen)
- Integrated fault trouble shooter
- Rapid drain device in lye box

### OPTIONS:

- Thermal insulation of drum
- Data record and storage system
- Additional monitor
- Printer
- pH probe and connection
- Media measurement devices
- Additional dosage contacts
- Others features upon request



# X-Press 40/60/90

# X-Controller

The Single Station dewatering presses of IMAGE is extremely rigid in mechanical design and reliability. Different sizes corresponding to the batch size from 40kg up to 100 kg are available. Heavy duty hydraulic set from well known supplier in Europe makes IMAGE press the most reliable in the market. Left or right discharge direction is available. Custom made design such as extension of the discharge unit or special voltages is possible on request.

## STANDARD FEATURES:

- Stable design (10,000kg)
- Frame construction with clamped columns
- All parts in contact with linen are made of stainless steel
- Hydraulic unit with  $p_{max}=310\text{bar}$
- Stainless steel covers
- Oversized natural rubber membrane
- Mechanical discharge pusher
- PLC control with text and graphic display
- PLC Menu and dialog programming
- Selectable pre-press sequence
- Four parametric pressure stages
- 15 adjustable pressure programs
- Integrated alarm and fault message system

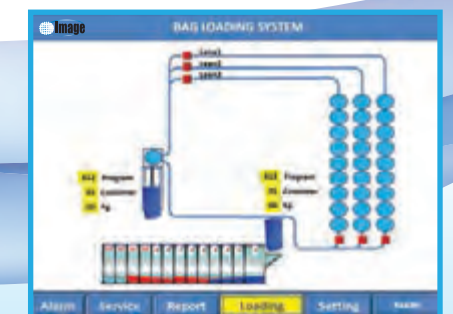
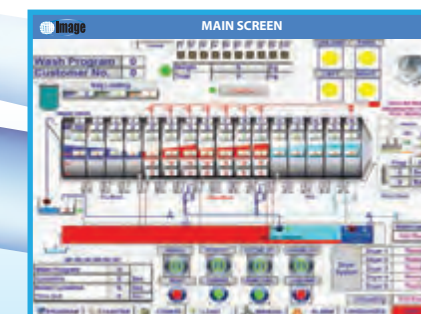
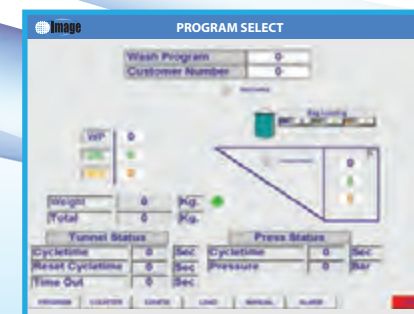
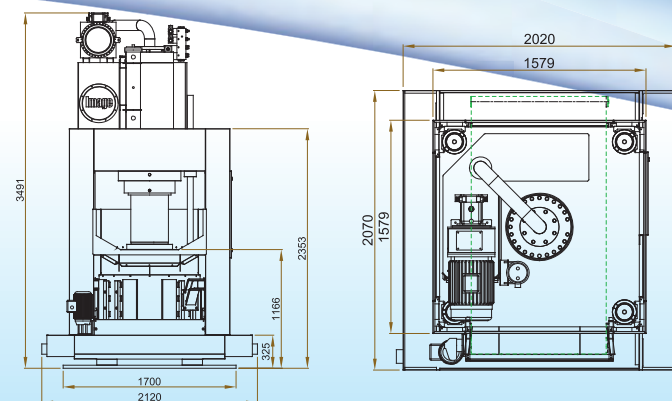
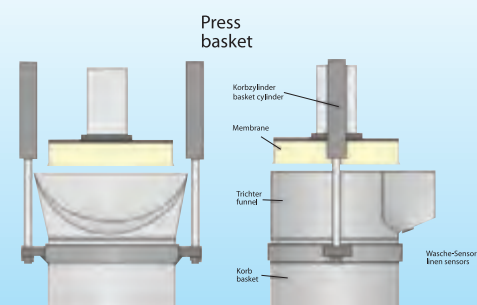
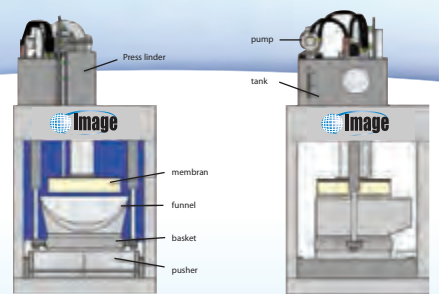


All IMAGE-controls have a proofed long life design

- The controls are available for;
- Loading conveyors
- Bag loading systems
- Tunnel washer
- Presses
- Shuttle conveyor
- Intermediate conveyor
- Common control units
- Dryers
- Unloading conveyor
- Washer extractors
- Complete washing systems
- Special machines
- Data record and storage systems



PLC controls and terminals can handle all different kinds of machines and systems. PLC controls with Touch Screen terminals handle the data input and visualization of all the system processes. High quality built in components guarantee the most simple control for operators.





# X-Dryer 60/90/120/180

## INDUSTRIAL HIGH PRODUCTIVITY DRYERS

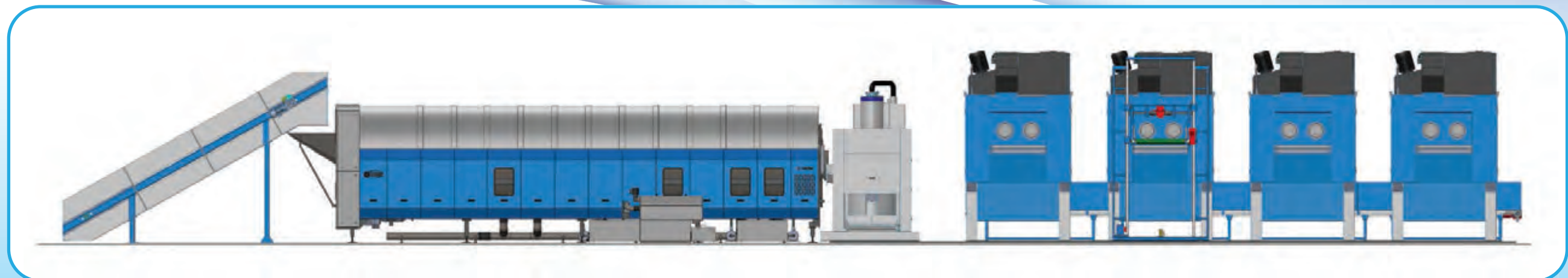
LARGE CAPACITY > FLEXIBILITY > BUILT TO LAST >  
PROTECT YOUR INVESTMENT

- The X-Dryer Series is the perfect match for tunnel washing system operation. With capacity ranges from 60-kg up to 200-kg (130-450 pounds) makes our dryer range suitable for most tunnel washers capacities. Just ask and the dryer that suits the application can be built. Quality material and workmanship make the X-Dryer Series reliable and long lasting.
- Microprocessor and Computer Control  
The X-Dryer Series control is capable of linking with the central control to work as a single system. The control monitors the temperatures, drying action and the performance with unsurpassed accuracy to ensure trouble free operation. The computer helps enhance safety in the laundry by verifying airflow and monitoring the temperature sensor and door.



Heated Air Flow Circulation Diagram through the Steam Coil, Rotating Basket and extracted out by the suction Blows to the exhaust duct.

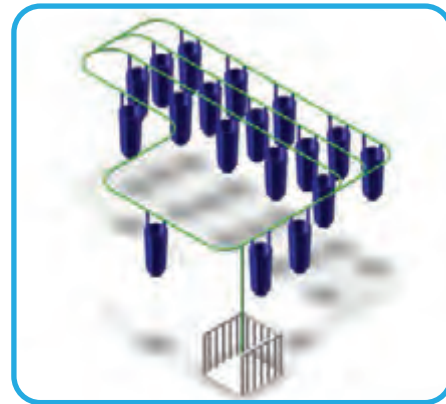
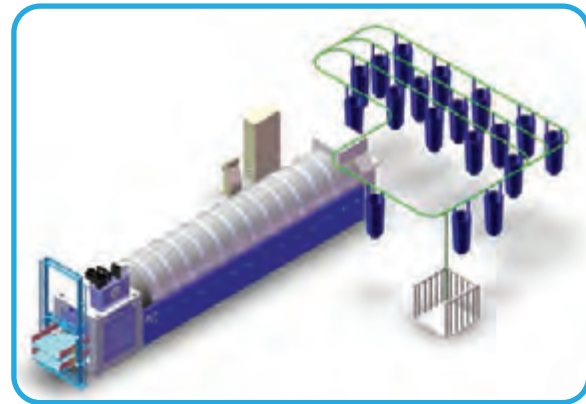
- Air Flow Diagram  
The flow of the air through the basket is designed for optimum energy consumption
- Stainless Steel Basket  
The stainless steel 304 (18/8) cylinder is supported by four 11 inch diameter high temperature wheels. The wheels are adjustable keeping the cylinder in position at all times. The wheels on one side are connected to a shaft and a gear motor that drives the cylinder.
- Lint Filter and Lint Compartment  
The lint filter is efficient and provides a good airflow that reduces energy consumption. The control monitors the lint filter and stops the machine should the lint screen become blocked. It is easily accessible from the side.





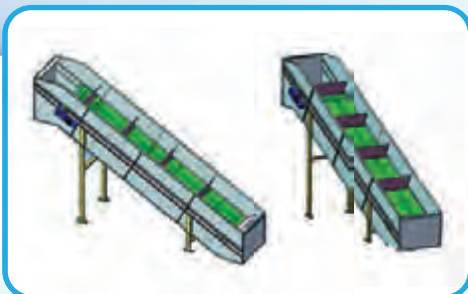
# X-Transport

## MONORAIL BAG LOADING SYSTEM



## CONVEYORS

### LOADING CONVEYOR

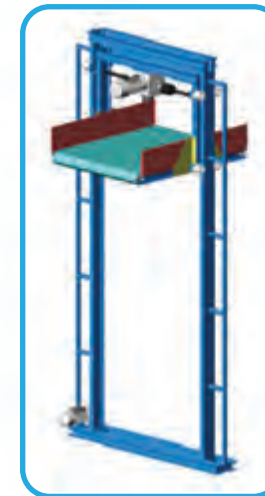


### COLLECTING CONVEYOR

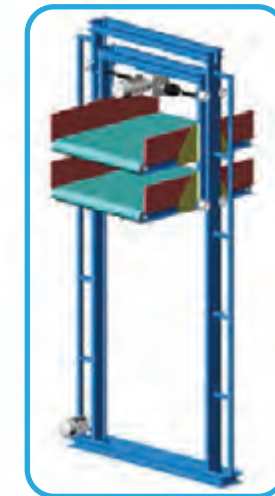


## SHUTTLES

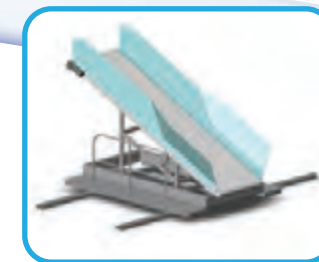
### SINGLE CAKE SHUTTLE



### DUAL CAKES SHUTTLE



### SINGLE SHUTTLE



### DUAL SHUTTLE





# X-SERIES

# X-Reference

